

## Getting to the Trailhead

Follow Mount Seymour Parkway to Berkley. Turn north onto Berkley and head all the way to the end of the street. Park near the sports field at top of Berkley. Porta Potty available. Do NOT park on Hyannis.

## Trailhead

Find Baden-Powell Trail on south side of Hyannis Drive.

## Baden Powell

- Descend Baden-Powell until you come to the junction at Fisherman's Trail.

## Fisherman's to Mystery Creek

- Turn RIGHT onto Fisherman's Trail.
- At second turnoff on the right, turn RIGHT and ascend Mystery Creek Trail.

## REGROUP

## Powerline

- Turn RIGHT onto Powerline.
- Take first LEFT to get to Ned's Atomic Dustbin.

## Ned's Atomic Dustbin

- Take first RIGHT onto Ned's.
- At next intersection stay STRAIGHT on Ned's (a creek will be on your right).
- Stay right until you come to Mushroom Trail (first trail on your right).

## REGROUP

## Mushroom

- Turn RIGHT onto Mushroom Trail.

## Dale's Trail

- Take next RIGHT onto Dale's Trail.
- Stay right on Dale's until you come to Powerline.

## REGROUP

## Forever After

- Cross Powerline and keep STRAIGHT on Forever After.
- At T-junction turn RIGHT onto Bridle Path.

## REGROUP

## Bridle Path to Will's Way

- Watch for LEFT turn onto Will's Way. (Note: confusing intersection where trailheads are close together. Should be **second** left turn off Bridle Path. Not North Shore High School League Trail.)

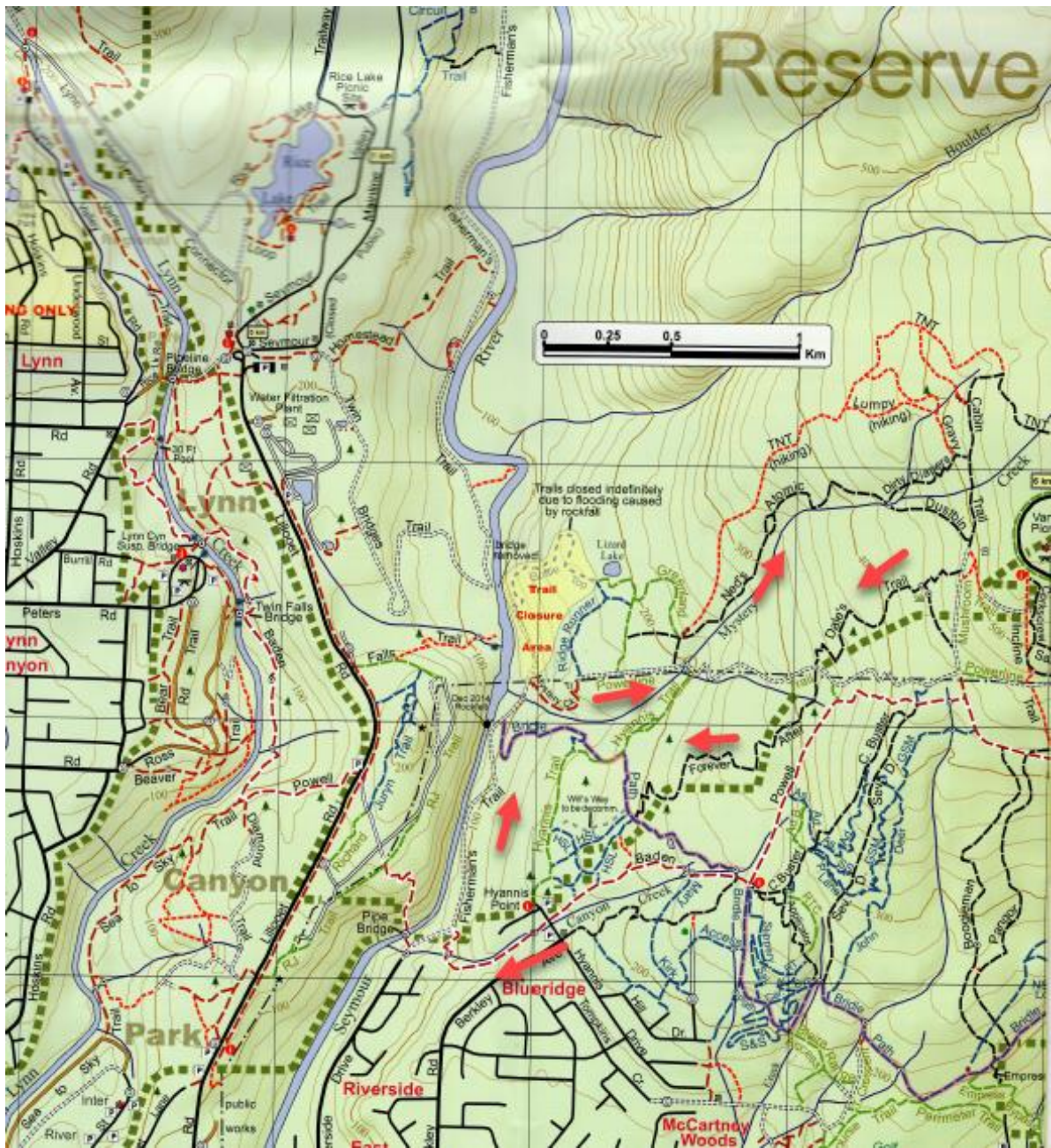
## Hyannis

- At T-junction turn LEFT onto Hyannis Trail.
- Stay straight on Hyannis Trail back to Hyannis Drive.
- Return to sports field on Berkley.

## 20 km - STRETCH



See detailed map on next page...



**B-P, Fisherman's, Mystery Creek, Powerline, Ned's, Dales, Forever After, Will's Way, Bridle Path**